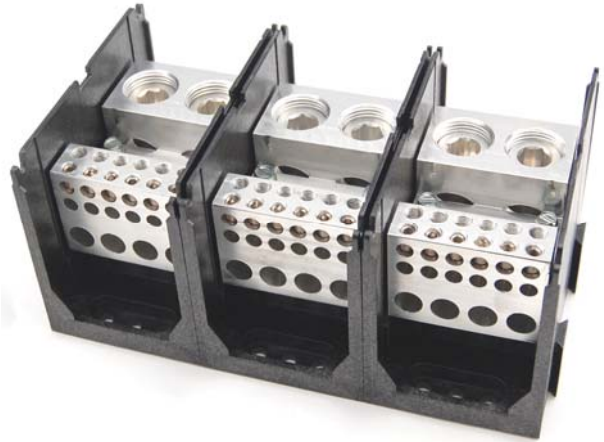


# Product Data Sheet



## 135X707

Power Distribution Block  
 UL Listed  
 Category QPQS  
 950 Amps, 600 Volts (AC/DC)



Provides Feeder Circuit Terminal Spacing up to 600 Volts per UL 508A, Section 10.

**Wire Range:**

- Line Side: (2) 750kcmil – 1/0 AWG
- Load Side: (4) 3/0 - 6 AWG
- (12) #2 –14 AWG

See tables below for [SCCR wire ranges, flexible stranded and multiple wire approvals.](#)

**Electrical Ratings:**

- 950A copper wire, 770A aluminum wire (Based on NEC Table 310-16, 75°C columns)
- UL Voltage Rating: 600 Volts AC/DC (UL 1953)
- Factory and Field Wiring

**Agency Certifications:**

- UL Listed, Investigated to UL 1953, File QPQS.E309401
- RoHS Compliant

**Short Circuit Current Ratings:**

SCCR Rating applies for Copper Stranded wire only  
 UL Class B, C (known as Rigid Stranded, Building Wire, Code Wire)  
 UL Class G, H, I (Flexible Stranded, includes DLO)

| Suitable Conductors (kcmil/AWG)<br>Copper, Stranded |                |               |         | Overcurrent Protection<br>Class/Max Amp Rating |     |     |     |    | SCCR, RMS<br>SYM Amps | Volts<br>Max |
|---|----------------|---------------|---------|--|-----|-----|-----|----|-----------------------|--------------|
| Line  |                | Load          |         |  |     |     |     |    |                       |              |
| Size  | Class          | Size          | Class   | J  | T   | RK1 | RK5 | G  |                       |              |
| 750 - 1/0<br>535-1/0                                | B,C<br>G, H, I | 3/0 -2        | B,C     | 600  | 700 | 600 | 200 | 60 | 100,000               | 600          |
|   |                | 2/0 - 2       | G, H, I | 500  | 500 | 400 | 200 | 60 |                       |              |
|   |                | 3/0 - 6       | B,C     | 300  | 300 | 200 | 100 | 60 |                       |              |
|   |                | 2/0 - 6       | G, H, I |  |     |     |     |    |                       |              |
|   |                | Small Opening |         |  |     |     |     |    |                       |              |
| 2 - 6   | B,C            | 4 - 6         | B,C     | 300  | 300 | 200 | 100 | 60 |                       |              |
|   | G, H, I        |               |         |  |     |     |     |    |                       |              |

For DC power or any wire combinations or Overcurrent Protection not shown- SCCR is 10,000A

Minimum Enclosure Size: 20" x 24" x 8" (3840 cu. In)

**Mechanical Ratings:**

- Maximum insulator base temperature: 125°C (257°F) UL RTI
- Flammability rating of insulator base: UL 94 V-0

**Materials:**

- Connector: High conductivity aluminum, tin plated
- Insulator base: Glass filled polycarbonate (thermoplastic)
- Terminal screws: Aluminum, tin plated and Steel, nickel plated
- Connector mounting screw: Steel, zinc plated

**Wire Ranges, Wire Types, Torque Ratings: 135X707**

UL Class B, C (known as Rigid Stranded, Building Wire, Code Wire)  
 UL Class G, H, I (Flexible Stranded, includes DLO)

**Line Side 2) 750 kcmil - 1/0 AWG**

| Copper Conductor   |        |         |          |
|--------------------|--------|---------|----------|
| Wire Size          | Torque |         | UL Class |
| kcmil - AWG        | N.m    | in. lbs |          |
| 750 - 1/0          | 67.8   | 600     | B, C     |
| 535 - 1/0          | 67.8   | 600     | G,H,I    |
| Aluminum Conductor |        |         |          |
| Wire Size          | Torque |         | Type     |
| kcmil - AWG        | N.m    | in. lbs |          |
| 750 - 1/0          | 67.8   | 600     | Stranded |

**Load Side 8) 3/0 - 6 AWG**

**Load Side 12) 2-14 AWG**

| Copper Conductor   |        |         |               |                 | Copper Conductor                    |        |         |                |                 |
|--------------------|--------|---------|---------------|-----------------|-------------------------------------|--------|---------|----------------|-----------------|
| Wire Size          | Torque |         | UL Class      | No. Per Opening | Wire Size                           | Torque |         | UL Class       | No. Per Opening |
| kcmil - AWG        | N.m    | in. lbs |               |                 | kcmil - AWG                         | N.m    | in. lbs |                |                 |
| 3/0                | 20.3   | 180     | B, C          | 1               | 2                                   | 5.7    | 50      | B, C           | 1               |
| 2/0                | 20.3   | 180     | B, C, G, H, I | 1               | 3                                   | 5.7    | 50      | B,C            | 1               |
| 1/0                | 20.3   | 180     | B, C, G, H, I | 1               | 4                                   | 5.7    | 50      | B, C, G, H, I  | 1               |
| 1                  | 20.3   | 180     | B, C, G, H, I | 1               | 6                                   | 5.7    | 50      | B, C, G, H, I  | 1               |
| 2                  | 20.3   | 180     | B, C, G, H, I | 1               | 8                                   | 5.7    | 50      | B, C, G, H, I  | 1               |
| 3                  | 20.3   | 180     | B, C, G, H, I | 1               | 10                                  | 4.5    | 40      | B, C, G, H, I* | 1               |
| 4                  | 20.3   | 180     | B, C, G, H, I | 1               | 12                                  | 4.5    | 40      | B, C, G, H, I* | 1               |
| 6                  | 20.3   | 180     | B, C, G, H, I | 1               | 14                                  | 4.5    | 40      | B, C, G, H, I* | 1               |
|                    |        |         |               |                 | *Also Solid Cu                      |        |         |                |                 |
| Aluminum Conductor |        |         |               |                 | Aluminum Conductor (#8 AWG Minimum) |        |         |                |                 |
| Wire Size          | Torque |         | Type          | No. Per Opening | Wire Size                           | Torque |         | Type           | No. Per Opening |
| kcmil - AWG        | N.m    | in. lbs |               |                 | kcmil - AWG                         | N.m    | in. lbs |                |                 |
| 3/0 - 6            | 20.3   | 180     | Stranded      | 1               | 2                                   | 5.7    | 50      | Stranded       | 1               |
|                    |        |         |               |                 | 3                                   | 5.7    | 50      | Stranded       | 1               |
|                    |        |         |               |                 | 4                                   | 5.7    | 50      | Stranded       | 1               |
|                    |        |         |               |                 | 6                                   | 5.7    | 50      | Stranded       | 1               |

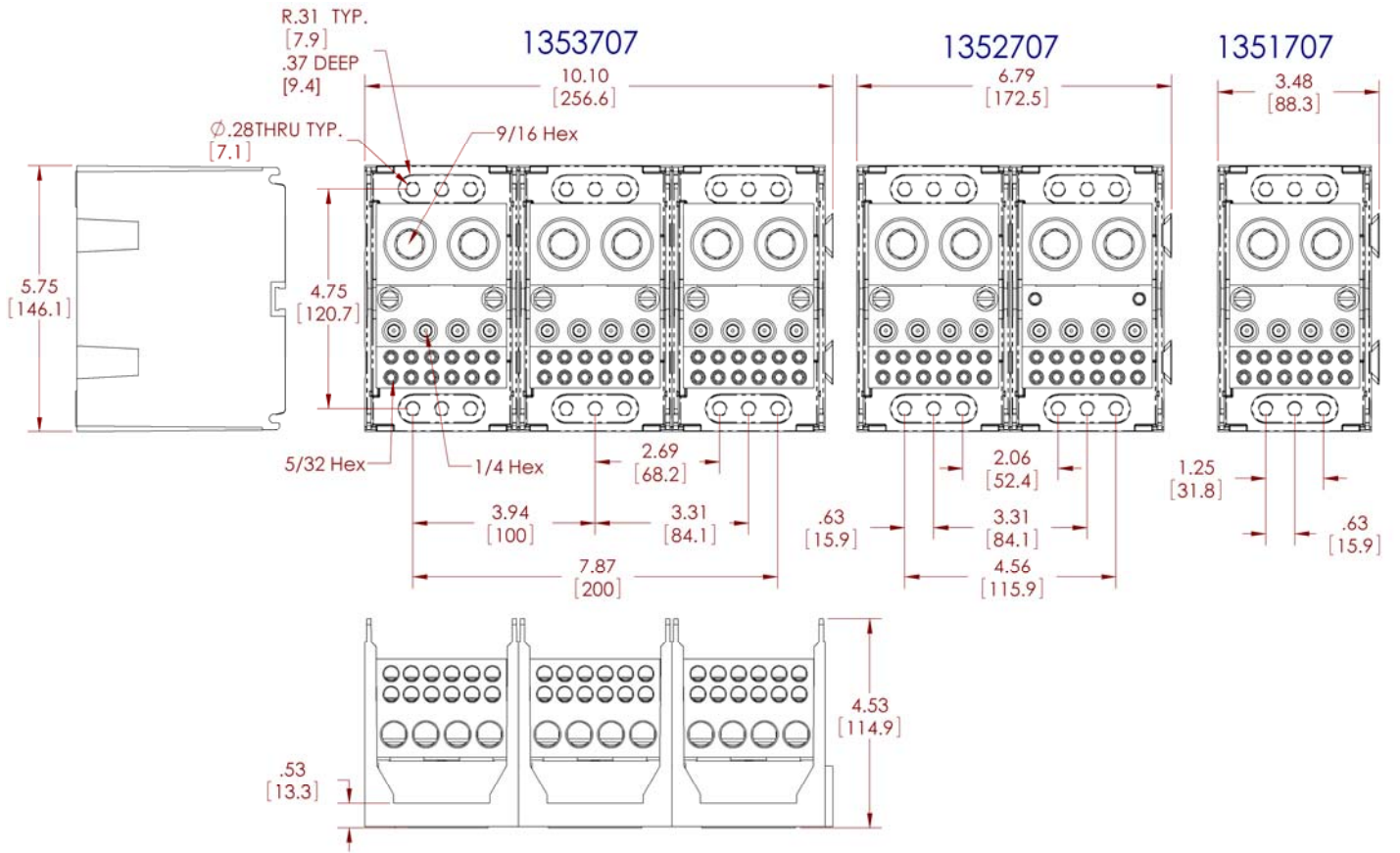
**Installation:**

- Wire strip length, line and load side tap – 1 3/4"
- Wire strip length, load side tap, top row – 7/8; bottom row – 1 7/8"
- Panel mountable: recommended fastener (4) per pole, 1/4 " or 6mm Torque to 30 in. lbs. (3.4 N.m)

Line Side 750 kcmil wire opening- diameter 1.125" (28.5 mm)

Load Side 3/0 AWG wire opening -diameter .547" (13.9 mm)

Load Side #2 AWG wire opening- diameter .312" (7.9 mm)



[WWW.MARATHONSP.COM](http://WWW.MARATHONSP.COM)  
1-419-352-8441